

THE FDC | FLIN FLON - DENARE BEACH - CREIGHTON

INVEST IN THE FDC REGION

REGIONAL PROFILE





FDC Regional Economic Development Commission

City of Flin Flon | Town of Creighton | Village of Denare Beach

Richard+Wintrup
Planning and Development
202-885 Notre Dame Avenue
Winnipeg, MB, R3E 0M4
ph: 204.202.7672
www.richardwintrup.com



CONTENTS

About The FDC Region1

1.0 Key Sectors 3

Manufacturing.....3

Tourism, Arts and Culture.....4

Service Hub and Housing.....5

Information Technology and Energy Innovation....6

2.0 Access to Markets 7

Roads.....8

Rail.....8

Air.....8

3.0 Our Story 10

3.1. Surrounding Communities.....12

4.0 Lively, Vibrant, and Talented Communities 14

Talent14

Desirable Communities.....15

4.1. Amenities.....16

Outdoor Adventure Experience16

Arts, Culture and The Authentic Explorer.....16

Festivals, Sporting and Recreation Events17

Skiing, Mountain Biking & Snowmobiling.....17

Arenas18

Golf18

Meeting Spaces18

5.0 Access to The Outdoors 19

5.1. The Outdoor Experience.....20

Lakes20

Trails.....21

Provincial Parks.....22

Natural Features.....23

6.0 Developement Areas 24



ABOUT THE FDC REGION

Flin Flon's origins can be traced back to the discovery of gold near Amisk Lake in 1910, which brought people to the area from all over Canada. In 1915, Tom Creighton and David Collins discovered massive zinc-ore which lead to Hudson Bay Mining & Smelting (now Hudbay Minerals) to start mining operations in the area, which continues to this day as a critical influence to the economy of the area.

Hudson Bay Mining and Smelting Company quickly established a fully-functional mine with one of the largest smelters in Canada. This investment by Hudbay quickly developed Flin Flon – Creighton – Denare Beach into a thriving community.

Hudson Bay Mining & Smelting (HBM&S) had operated in the City of Flin Flon, Manitoba since 1930. Today, Hudbay is still a major employer in the area, and mining remains at the heart of the economy.

The Flin Flon area is located in the Flin Flon Belt, a Precambrian volcanic belt that was an element of the Trans-Hudson Orogen. The majority of the belt was formed approximately 1.9 billion years ago by aquatic volcanic eruptions; these intense eruptions and multiple episodes of glaciation left behind the present unique landscape. This belt is the source of the Flin Flon area's vast mineral deposits, which are primarily zinc, copper, silver and gold.

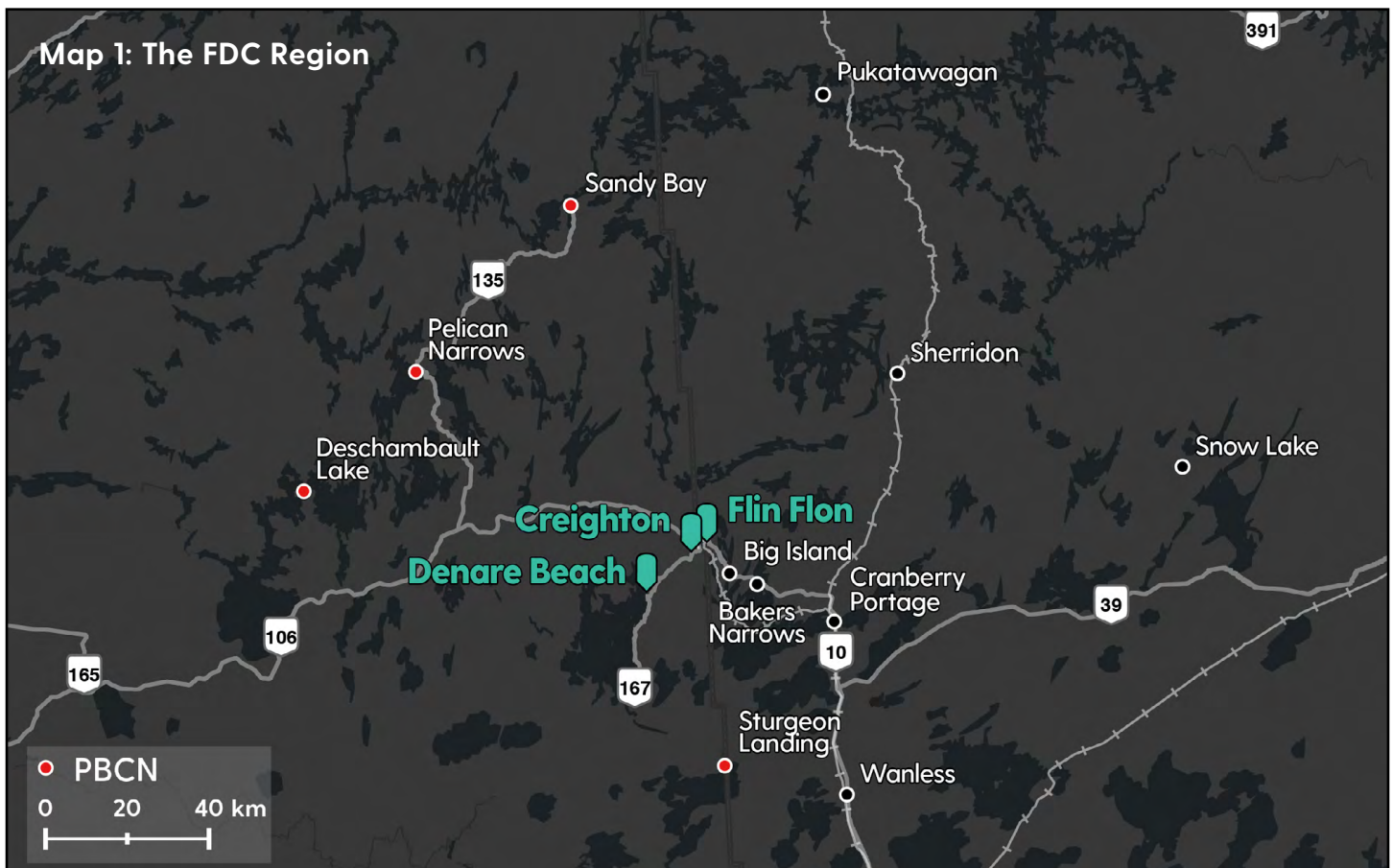




PHOTO TAKEN WITHIN
BAKERS NARROWS PROVINCIAL PARK

Well before the mining industry was established in the early 1900s, the communities were traditionally the home of the Swampy and Rocky Cree people. It is important to acknowledge that The Region is located within Treaty 5 territory.

Today, The FDC Region has a special relationship with Peter Ballantyne Cree Nation, located in northern Saskatchewan and together, are nourishing a path towards reconciliation and shared benefits.

The economy of the Region is rooted in mining, resource extraction, tourism and serves as a hub for shopping, culture, commerce, health, industrial supplies and distribution for communities along Highway 106 in Saskatchewan and Highway 10 in Manitoba. This encompasses a total market draw of over 15,000 people. There is room to grow with available, serviced land and a mobilized workforce ready to support land development investment.

The range of waterbodies and rocky landscapes in the region make it an attractive place for outdoor enthusiasts to enjoy the serenity of nature, abundance of lakes, and a well established tourism sector, ready to support and serve visitors and investors, alike.

KEY ECONOMIC SECTORS:

- [Manufacturing](#)
- [Tourism, Heritage, Arts and Culture](#)
- [Service Hub and Housing Sector](#)
- [Information Technology and Energy Innovation](#)



PHOTO TAKEN WITHIN
THE FDC REGION

1.0 KEY SECTORS

MANUFACTURING

The FDC Region is rooted in mining and resource extraction and has an evolved industry related to mining supply and support services. The offering of The Region to support an invigorated and innovative mining sector remains a core priority for all communities.

With the downsizing of HudBay operations in Flin Flon, there is significant capacity to support manufacturing operations. The region offers:

- Substantial hydro-electric power source
- Established industrial area with existing buildings and shops to support new manufacturing opportunities

- Access to major rail and road system
- Access to mobilized, loyal and educated workforce

For additional resources and information related to The FDC Region's Manufacturing Sector, please review the following links:

- [Manufacturing Sector Profile](#)
- [Development Areas - Hudbay](#)



FLIN FLON
AT NIGHT

1.0 KEY SECTORS

TOURISM, HERITAGE, ARTS AND CULTURE

Nestled in the Canadian Shield, the region is a thriving outdoor enthusiasts playground, rich with an abundance of nature, lakes, walking and hiking trails, groomed skiing and snowmobiling trails, clear sight of the aurora borealis and a mobilized hospitality sector, ready to support and serve visitors and investors, alike.

The region is home to a thriving Arts and Culture sector including the Northern Visual Arts Centre. It is also positioned to attract the Authentic Explorer, being someone interested in unique history of communities. Flin Flon is the City Built On Rock.

The region is ready to host major events and festivals.

For additional resources and information related to The FDC Region's Tourism, Heritage, Arts and Culture Sector, please review the following links:

- [Tourism, Heritage, Arts and Culture Sector Profile](#)
- [Regional Amenities](#)



1.0 KEY SECTORS

SERVICE HUB AND HOUSING SECTOR

The area serves as a regional centre and hub for shopping, culture, commerce, health, industrial supplies and distribution for communities along Highway 106 in Saskatchewan and Highway 10 in Manitoba.

This encompasses a large market draw of over 15,000 people from surrounding communities. There is room to grow with available, serviced land and a mobilized region ready to support land development investment.

For additional resources and information related to The FDC Region's Service Hub and Housing Sector, please review the following links:

- [Service Hub and Housing Sector Profile](#)
- [Development Areas - Hwy 10A / Main St.](#)



1.0 KEY SECTORS

INFORMATION TECHNOLOGY AND ENERGY INNOVATION

The Post-COVID economy will be digital, reducing geography and location constraints. Critical to successful online business. The region has state of the art technology to communicate in real time.

There are several digital service providers established in the region who have the infrastructure (fibre cables, copper cables, digital subscriber lines, and satellites) to deliver fast and reliable internet speeds.

The region has supports in place to assist with entering and staying in the Online Economy.

For additional resources and information related to The FDC Region's Digital Infrastructure and The Online Economy Sector, please review the following links:

- [Information Technology and Energy Innovation Sector Profile](#)



2.0 ACCESS TO MARKETS



The FDC Region boasts a number of competitive advantages that position the communities of Flin Flon – Creighton – Denare Beach as the ideal location for opportunity and investment.

The FDC Region is well served by an extensive network of major highways through Highway 10 (Manitoba) and Highway 106 (Saskatchewan) making it a strategic hub for immediate communities. Deschambeault Lake, Sandy Bay and Pelican Narrows in Saskatchewan; and Big Island, Bakers Narrows, Cranberry Portage, Sherridan and Snow Lake in Manitoba make up the immediate market of the FDC Region with a population draw of over 15,000 people as of 2021.

Provincial Trunk Highway (PTH) 10 and Highway 106 are the primary links to the greater metro areas for both Provinces. It is also a northern link in the Mid-Continent Trade Corridor that links both road and rail, creating a seamless supply chain to service Canada's north and also to flow raw material to other manufacturing operations. It is here that opportunity lies in tapping into the region as a remote logistics and resupply hub.



ROADS

PTH 10 begins at the International Peace Garden along the Canada–United States border near Boissevain and travels north through Brandon, Dauphin, Swan River, and The Pas upon reaching Flin Flon at the Saskatchewan Border. Highway 106, also known as Hanson Lake Road, begins at the Village of Smeaton approximately 4 hours from Flin Flon and links to PTH 55 and the City of Prince Albert.

A popular alternative route to access the FDC Region in Manitoba is through Grand Rapids (via PTH 6) and passing by Snow Lake (via PTH 39).

Traveling to the region from the southern part of Saskatchewan is accessed through Highway 106. This highway is considered a Secondary Weight Highway and is capable of transporting vehicles of up to 63,500 kilograms, similar to the RTAC restriction for PTH 10 in Manitoba.

RAIL

The FDC Region is connected to more than 800 miles of railway lines in northern Manitoba, which includes the 545 miles of railway from The Pas to Churchill, known as the “Bay Line” and operated

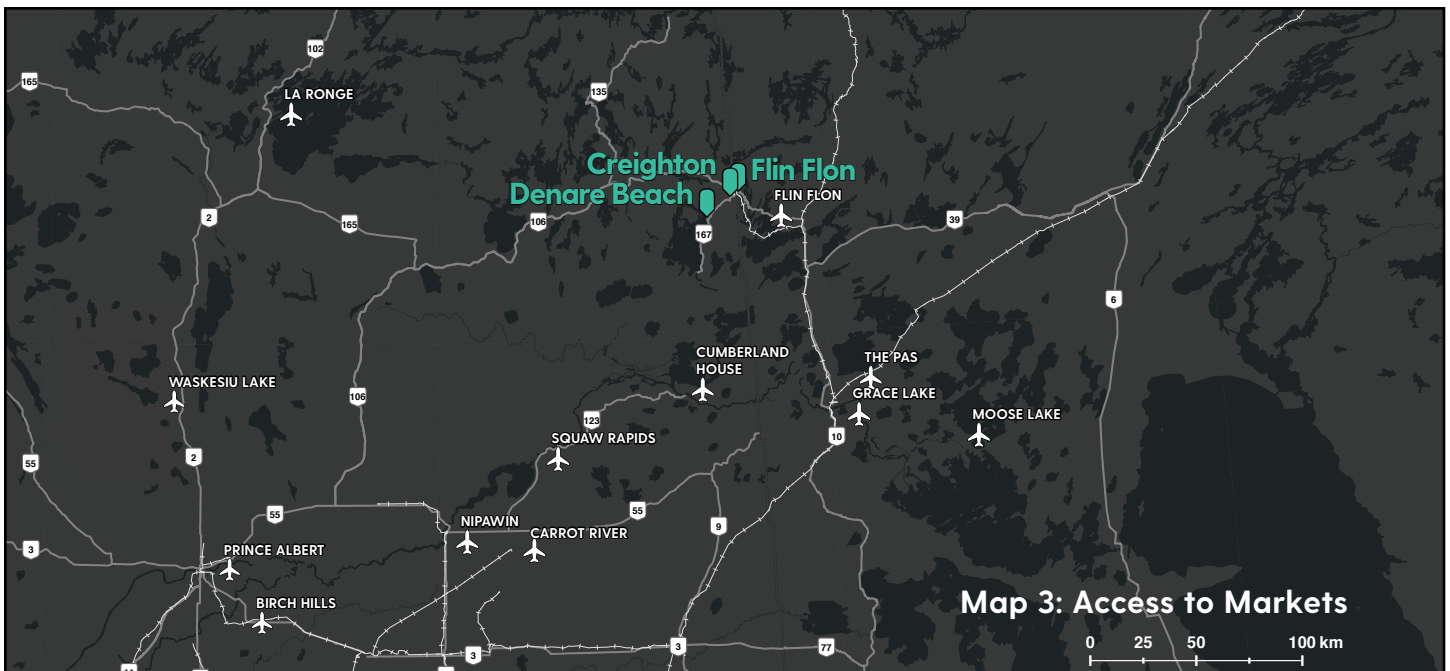
by the Hudson Bay Railway. The Pas serves as the Bay Line interchange point for Canadian National Railway and the Keewatin Railway Company, a First Nations owned railway that operates a route from Sheritt Junction (near Flin Flon) to Pukatawagan. Truck-rail interchanges are provided in Thompson and The Pas.

VIA Rail’s station in The Pas serves the FDC Region and the Winnipeg Metro Region.

AIR

The Flin Flon Airport provides a convenient gateway to regional, national and international markets to have access to corporate head offices for sale of products and services. It’s less than a 60-minute direct flight to James A Richardson International Airport. There are daily flights.

- Calm Air
- Missinippi Air
- Cranberry Air (Charter)
- Fast Air (Charter)
- Fogal Air (helicopter and fixed wing Charter)
- Midwest Helicopters (Charter)
- Perimeter Aviation (Charter)
- Wings over Kississing (Charter)



NOTEABLE AIRPORTS AND FLOAT PLANE BASES IN THE REGION:

Flin Flon Airport:

- Located 20 kilometres southeast of Flin Flon.
- Serves as a tanker base for Ministry of Sustainable Development water bombers.
- One runway (5,004 x 150 feet) constructed of asphalt.

The Pas Airport:

- Located 131 km from Flin Flon
- One runway (5,901 x 150 ft) constructed with asphalt.

Grace Lake Airport:

- Located 142 km from Flin Flon
- Home to The Pas Flying Club hangers and clubhouse, and a local airplane mechanic.
- Two runways, both constructed with gravel (3265 x 50 ft, 2853 x 50 ft).
- Home to Missinnipi Airways.



FLIN FLON AIRPORT

3.0 OUR STORY

Flin Flon's origins can be traced back to the discovery of gold near Amisk Lake in 1910, which brought people to the area from all over Canada. In 1915, Tom Creighton and David Collins discovered massive zinc-ore which led to Hudson Bay Mining & Smelting (now Hudbay Minerals) to start mining operations in the area, which continues to this day as a critical influence to the economy of the area.

Tom Creighton and David Collins discovered the main lens of the Flin Flon volcanogenic massive sulphide (VMS) deposit in 1914. Hudson Bay Mining and Smelting Company quickly established a fully-functional mine with one of the largest smelters in Canada. This investment by Hudbay quickly developed Flin Flon – Creighton – Denare Beach into a thriving community.

Hudson Bay Mining & Smelting (HBM&S) had operated in the City of Flin Flon, Manitoba since 1930. Today, Hudbay is still a major employer in the area, and mining remains at the heart of the economy.

The Flin Flon area is located in the Flin Flon Belt, a Precambrian volcanic belt that was an element of the Trans-Hudson Orogen. The majority of the belt was formed approximately 1.9 billion years ago by aquatic volcanic eruptions; these intense eruptions and multiple episodes of glaciation left behind the present unique landscape. This belt is the source of the Flin Flon area's vast mineral deposits, which are primarily zinc, copper, silver and gold.



THE STORY OF FLIN FLON



STATUE OF JOSIAH
FLINTABBATEY FLONATIN

Josiah Flintabbatey Flonatin was a central character in a turn-of-the-century science fiction drug store novel, *The Sunless City*, written by J.E. Preston-Muddock. Legend has it that a tattered copy of the paperback was found in the boreal forest in 1914 by explorer and prospector Thomas Creighton, who came to Flin Flon looking for gold like many

others. In the story, Josiah Flintabbatey Flonatin sets out in a homemade submarine to explore a bottomless lake and ends up journeying to the centre of the earth. On his way down, Flin Flon describes a lake lined with gold and silver. When the actual town was founded by Hudson Bay Mining and Smelting, Creighton's nickname for the settlement stuck.



HISTORIC PHOTO OF
FLIN FLON'S ROSS STREET

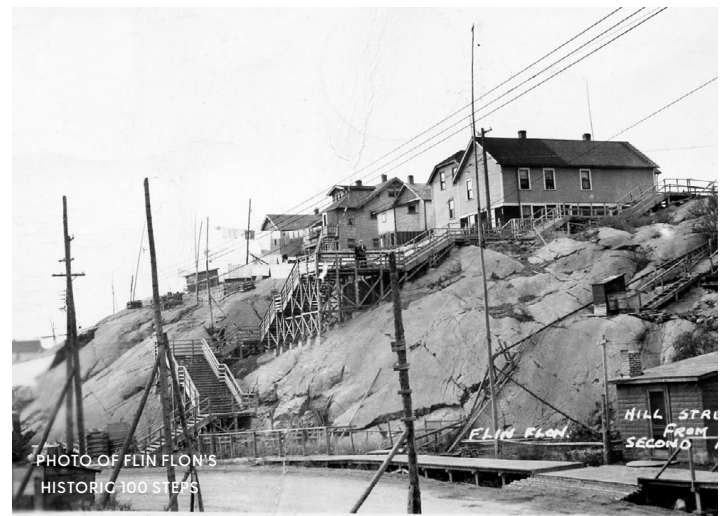


PHOTO OF FLIN FLON'S
HISTORIC 100 STEPS

3.1 SURROUNDING COMMUNITIES

The City of Flin Flon forms the core of the FDC Region and is adjacent to the Town of Creighton (5 minutes) and near The Village of Denare Beach (15 minute drive). As of 2016, the three communities have a combined population of 7,366.

There are several other small communities beyond the immediate surrounding Region that contribute to the overall economy, including the Local Urban Region (LUD) of Cranberry Portage, several all-season cottage areas, a number of town hamlets and First Nation communities such as Snow Lake, Sandy Bay, Sturgeon Landing, Pelican Narrows, and Deschambault Lake. Together, these distinct communities have a combined population of nearly 15,000 according to 2016 population census, with closer to 17,000 people including those who reside between these Manitoba and Saskatchewan communities.

TABLE 1	Jurisdiction	2016 Population / 2021 Population*	Distance (km) to Flin Flon
Flin Flon	MB	5185 / 5099*	-
Creighton	SK	1402 / 1203*	2.7
Denare Beach	SK	779 / 813*	20.2
Big Island	MB	N/A	12.4
Bakers Narrows	MB	277 / 364*	21.1
Cranberry Portage	MB	810 / 691*	47.9
Sherridon	MB	108 / N/A	113
Sturgeon Landing	SK / PBCN	81 / N/A	116
Pelican Narrows	SK / PBCN	2499 / N/A	121
Dechambault Lake	SK / PBCN	1061 / N/A	140
Sandy Bay / Wapaskokimaw 202	SK / PBCN	1178 / N/A	191
Snow Lake	MB	899 / 1088*	198

**Note: The full extent of the Denare Beach, Big Island, and Peter Ballantyne Cree Nation 2021 census data is currently unavailable.*

FLIN FLON - CREIGHTON DENARE BEACH



4.0 LIVELY, VIBRANT, AND TALENTED COMMUNITIES

TALENT

A key opportunity for investors is the region's talent. The FDC Region is home to a highly experienced, committed workforce, often with learned generational thinking and skills that have been shaped over the last 100 years.

By occupation and industry, the region outperforms on both the Manitoba and the Saskatchewan workforce averages on mining, trades, transportation, forestry, and jobs unique to processing and manufacturing. Many of the region's jobs are within these industries and provide a solid economic base.

To add to this base of a well-trained, experienced workforce, there are a number of jobs and opportunities in the retail trade, warehousing, education, health and wellness, and tourism and hospitality industries. These industries are the core employers in the FDC Region.



HUBBAY EMPLOYEES LOOKING
AT THE MINING FACILITY



INSIDE THE ROTARY WHEEL

The Region's workforce is made up of a higher proportion of people with apprenticeship and trades certificates (13.3%) or college certificates and diplomas (20.8%) compared to both the Manitoba and Saskatchewan average. Most are in engineering and repair technologies, with health and wellness as another key field of expertise. The third group are those who are in Business, Management and Public Administration.

Perhaps the most critical opportunity for any investor is workforce resiliency. The FDC Region's population is adaptable and resilient, most spending their entire lives working in a commodity-based economy.

COMMUNITY PROFILES

- [City of Flin Flon](#)
- [Town of Creighton](#)
- [Village of Denare Beach](#)

DESIRABLE COMMUNITIES

What makes the FDC Region unique and attractive is its resilient and mobilized community groups and associations. From schools and community recreation facilities, to medical, wellness and cultural services, the Region boasts a strong sense of community.

There are multiple options to be a part of a close-knit community suited to broad spectrum of interests and lifestyles, whether that be related to music and performing arts, music, sports, outdoor activities, cultural events and several community organizations.



4.1 AMENITIES

OUTDOOR ADVENTURE EXPERIENCE

The Region is home to world-class outdoor nature opportunities which draw visitors from across the globe. The Region's lakes are known for producing trophy Northern Pike, Walleye, and Lake Trout. There is a strong and mature fishing and hunting base in the region, resulting in well-established lodges in the FDC Region.

The area boasts groomed trails and associated venue infrastructure in skiing, mountain biking, hiking and snowmobiling. There is a large territory with potential for outdoor adventure tourism that has yet to realize its full potential.

ARTS, CULTURE AND THE AUTHENTIC EXPLORER

Flin Flon is known as the city built on rocks. It is rich in history and uniqueness, making it very well positioned to attract in 'The Authentic Explorer'.

- **Old Flin Flon** – Old Flin Flon is uniquely positioned to tap into the Authentic Explorer.
- **Arts Centre** – [The Northern Visual Arts Centre](#) (NorVa) is located in Flin Flon and is the artistic hub for The Region. The NorVa offers studio space, workshops and classes, and gallery space for artists within The Region. It also hosts a number of other art groups including a photo club and the Northern Palette Art Club.
- **Museums** – [Flin Flon Station Museum;](#) [Northern Gateway Museum.](#)



SNOWMOBILING
IN THE NORTH

FESTIVALS, SPORTING AND RECREATION EVENTS

With its impressive amenities and community minded citizens, The FDC Region is home to a wide variety of events from tournaments, conferences, trade-shows and meetings to large scale sporting and recreation events.

The established outdoor amenities of the region makes it an ideal place to host a variety of tournaments in both summer and winter, including fishing, adventure cycling, skiing, snowmobiling and golfing.

SKIING, MOUNTAIN BIKING & SNOWMOBILING

The region is home to 28 km light trail system that in winter is a cross country skier's dream and in summer is a daring mountain biker's paradise (welcome to The Precambrian Shield).

The Region has more than 135 kilometers of snowmobile trails to offer to winter riders.

The trails are supported by an all seasons Chalet. Several major cross country ski events have been held in the region over the years.



FLIN FLON COMMUNITY CHOIR

In 2013, the Flin Flon Community Choir performed, by invitation, at New York's Lincoln Centre Handel's Messiah as part of the Centre's Distinguished Concerts International New York City (DCINY) Concert Series.

Dr. Jonathan Griffith, artistic director and principal conductor of DCINY, said in a statement that the northern Manitoba choir was chosen "because of the quality and the exceedingly high level of musicianship demonstrated by the singers. These wonderful musicians not only represent a high quality of music and education, but they also become ambassadors for the entire community."

ARENAS

With a seating capacity of 2000 for sporting events and 3,500 for concerts, the [Whitney Forum](#) can handle most significant events or trade shows. Over the years, the arena has undergone many renovations, including additions of new dressing rooms, ice plant upgrades, new rink boards, and structural upgrades.

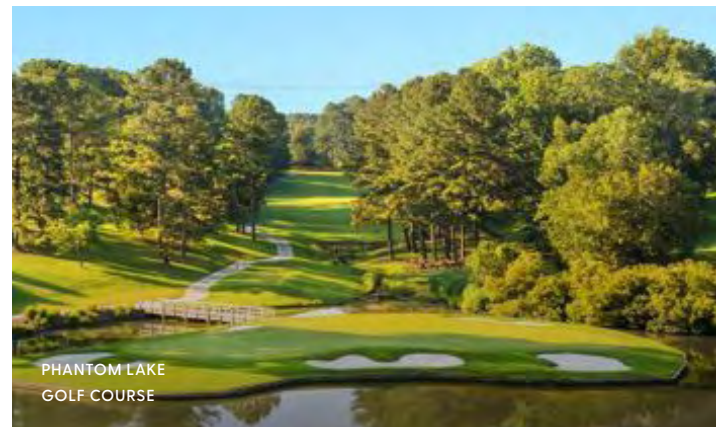
GOLF

The [Phantom Lake Golf Course](#) is located between Flin Flon and Creighton. A unique and beautiful nine-hole course where the fairways are nestled amongst the rock outcrops of the Precambrian Shield. The Course features ample parking, fully licensed Clubhouse, and experienced tournament coordinators that host several golfing tournaments annually.

MEETING SPACES

The region's assets include several meeting spaces ranging from small to large. This includes:

- RH Channing Auditorium - capacity 575 people
- Creighton Community Hall – 300 capacity
- Denareplex – capacity
- Victoria Inn – (Restaurant capacity 50, Lounge capacity 28, Unwinder nightclub capacity 86)
- Rocky View Conference Centre – (Dining Room/ Lounge capacity 78, Banquet/Conference Small Room capacity 25, Banquet/Conference Large Room capacity 50)
- Bakers Narrows Lodge – (The Club House capacity 80-100, Outdoor tent capacity 200)
- Rotary Wheel



5.0 ACCESS TO THE OUTDOORS

The vast number of lakes, rivers and unique and rugged landscapes accompany the area and represent a fundamental quality of the FDC Region.



VIDEO
FLIN FLON, MANITOBA - TRAVEL MANITOBA

5.1 THE OUTDOOR EXPERIENCE

LAKES

The Region is known for its lakes, rivers, streams and other natural features to explore and experience. The lakes offers not only tranquility, but also excellent fishing experiences with several well-located lodges attracting attention from all areas. Recently, The Region was named one of the best places to fish in Canada by travel website Expedia.

The following are some of the notable lakes within The FDC Region:

- Lake Athapapuskow
- Amisk Lake
- Big Island Lake
- Schist Lake
- First and Second Cranberry Lakes



LAKE WITHIN THE REGION

5.1 THE OUTDOOR EXPERIENCE

TRAILS

The FDC Region has a diversity of terrain and trails available to hikers, bikers and skiers. Here are some of the amazing trails to experience:

- [Flinty's Boardwalk and Hiking Trail](#)
- [Flin Flon Ski and Mountain Bike Trails](#) – over 28 km of groomed trails including a 2.2 km lighted valley loop
- [Brian King Nature Trail](#)
- [Community Connections Walking Path](#)
- [Bakers Narrows Scenic Tower](#)
- The Karst Spring Self-Guiding Trail
- Lighted walking path linking Creighton to Flin Flon



5.1 THE OUTDOOR EXPERIENCE

PROVINCIAL PARKS

Located 21 kilometres South-East of Flin Flon, along the shore of Lake Athapapaskow, [Bakers Narrows Provincial Park](#) consists of 145 hectares of Precambrian boreal forest. While providing an outdoor recreational and educational opportunity for the locals, the park also looks to effectively conserve the areas rich biodiversity and unique natural, cultural and heritage resources.

Surrounded by the water and boreal forest, [the scenic tower](#) within Bakers Narrows offers spectacular views of the landscape with additional interpretive signage providing a history of the area from early inhabitants to modern industry.

Hiking, camping, boating, wildlife viewing, photography, and fishing experiences are some of the opportunities available to visitors, and residents.



BAKERS NARROWS

5.1 THE OUTDOOR EXPERIENCE

NATURAL FEATURES

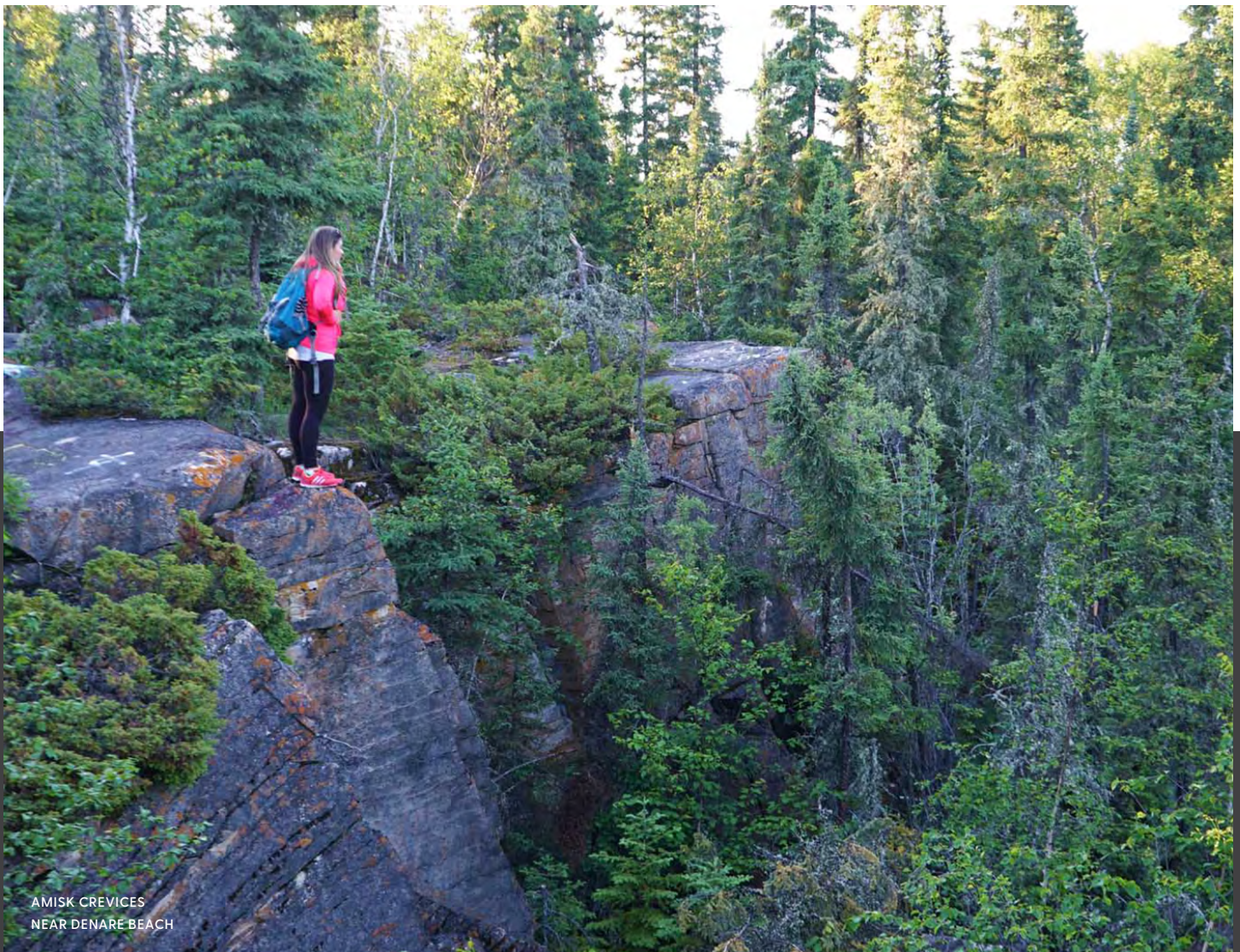
FLIN FLON – THE CITY BUILT ON ROCKS

Known as the city built on rocks, Flin Flon was established atop of the volcanogenic massive sulphide (VMS) deposit discovered by Tom Creighton and David Collins in 1914. The unique location of Flin Flon gives the city a beautiful rocky landscape and waterfront views like few other destinations.

PRECAMBRIAN SHIELD

The Precambrian Shield is a large and distinctive region typically located in the northern regions of Canada. Some of the oldest and most abundant rocks in Manitoba are Precambrian.

Known for its rough terrain, the Precambrian Shield contains many rocky cliffs, lakes, bogs, boreal forests, permafrost areas, and rich wildlife populations.



AMISK CREVICES
NEAR DENARE BEACH



6.0 DEVELOPMENT AREAS

The FDC Region currently has a number of development opportunities throughout the region. It is well-positioned with quality infrastructure and municipal services to support investment. This includes access to a planned and integrated network of roads, rails, airports, recreation facilities, water and wastewater facilities and piping. Flin Flon – Creighton – Denare Beach is the regional hub where these core services are abundantly available.

The Region's communities all have urban standard potable water and sanitary waste systems and treatment facilities with capacity to support all types of development.

Industrial-based energy is also available to support new manufacturing opportunities in the FDC Region that are collaborative and tap into HudBay infrastructure.

There is capacity for heavy, energy-intensive operations, manufacturing in addition to general business uses. For additional data and information on these sites, please follow the links provided bellow to The FDC Region's interactive maps:

- [Investment Navigator](#)

Note: The images in this document are for illustrative purposes only, they are not produced by R+W Planning and Development. Images shown in this document are for public consumption only.

