

THE FDC | FLIN FLON - CREIGHTON - DENARE BEACH



# CITY OF FLIN FLON

---

## COMMUNITY PROFILE





**FDC Regional Economic Development Commission**  
City of Flin Flon | Town of Creighton | Village of Denare Beach

**Richard+Wintrup**  
**Planning and Development**  
202-885 Notre Dame Avenue  
Winnipeg, MB, R3E 0M4  
ph: 204.202.7672  
[www.richardwintrup.com](http://www.richardwintrup.com)

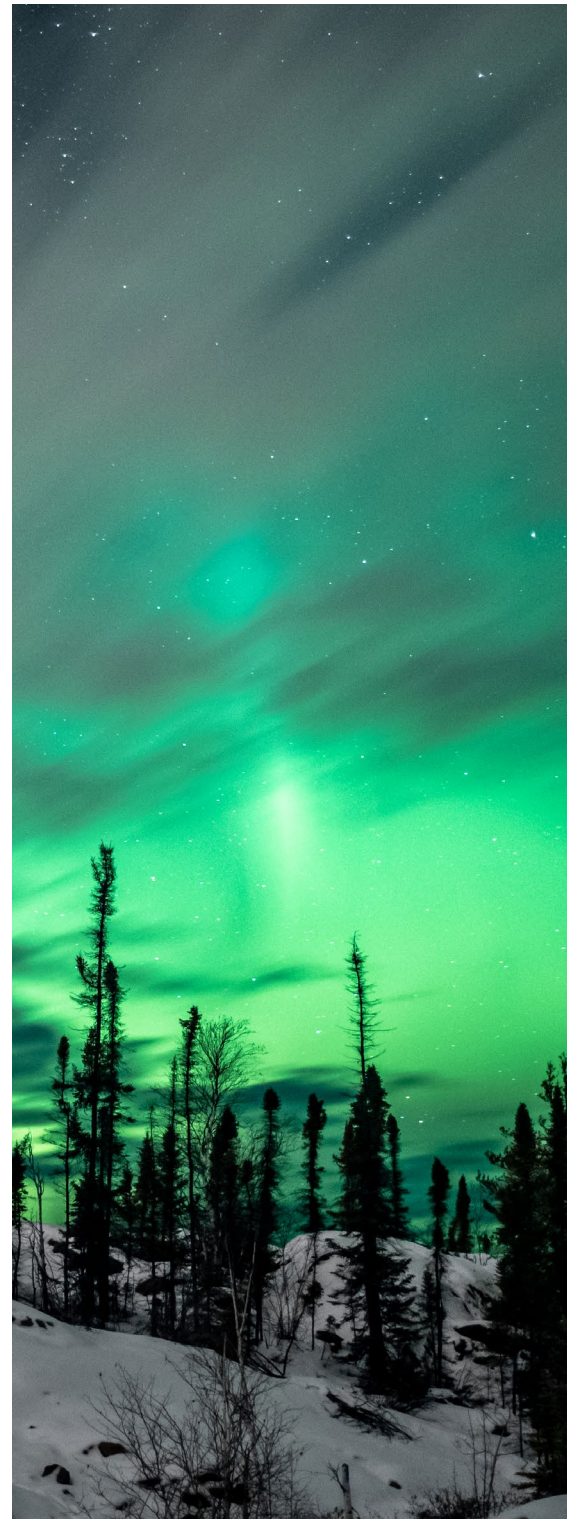


# THE REGION

The FDC Region is home to the established communities of Flin Flon, Creighton and Denare Beach, offering an enviable quality of life with a shared population of over 7,000 people. The communities were home to the Swampy Cree people well before the mining industry was established in the early 1900s. Throughout the last 100 years, one thing is certain; the communities continue to thrive, offering rich amenities, community and culture, affordable housing and a sophisticated, well-positioned industrial base.

The economy of the region is rooted in mining and tourism and serves as a regional hub for shopping, culture, commerce, health, industrial supplies and distribution for communities along Highway 106 in Saskatchewan and Highway 10 in Manitoba. This encompasses a total market draw of over 15,000 people. There is room to grow with available serviced land and a mobilized region ready to support land development, investment and new businesses.

The range of waterbodies and rocky landscapes in the region make it an attractive place for outdoor enthusiasts who enjoy the serenity of nature, pristine lakes, and a hospitable tourism sector, ready to support and serve visitors and investors, alike.



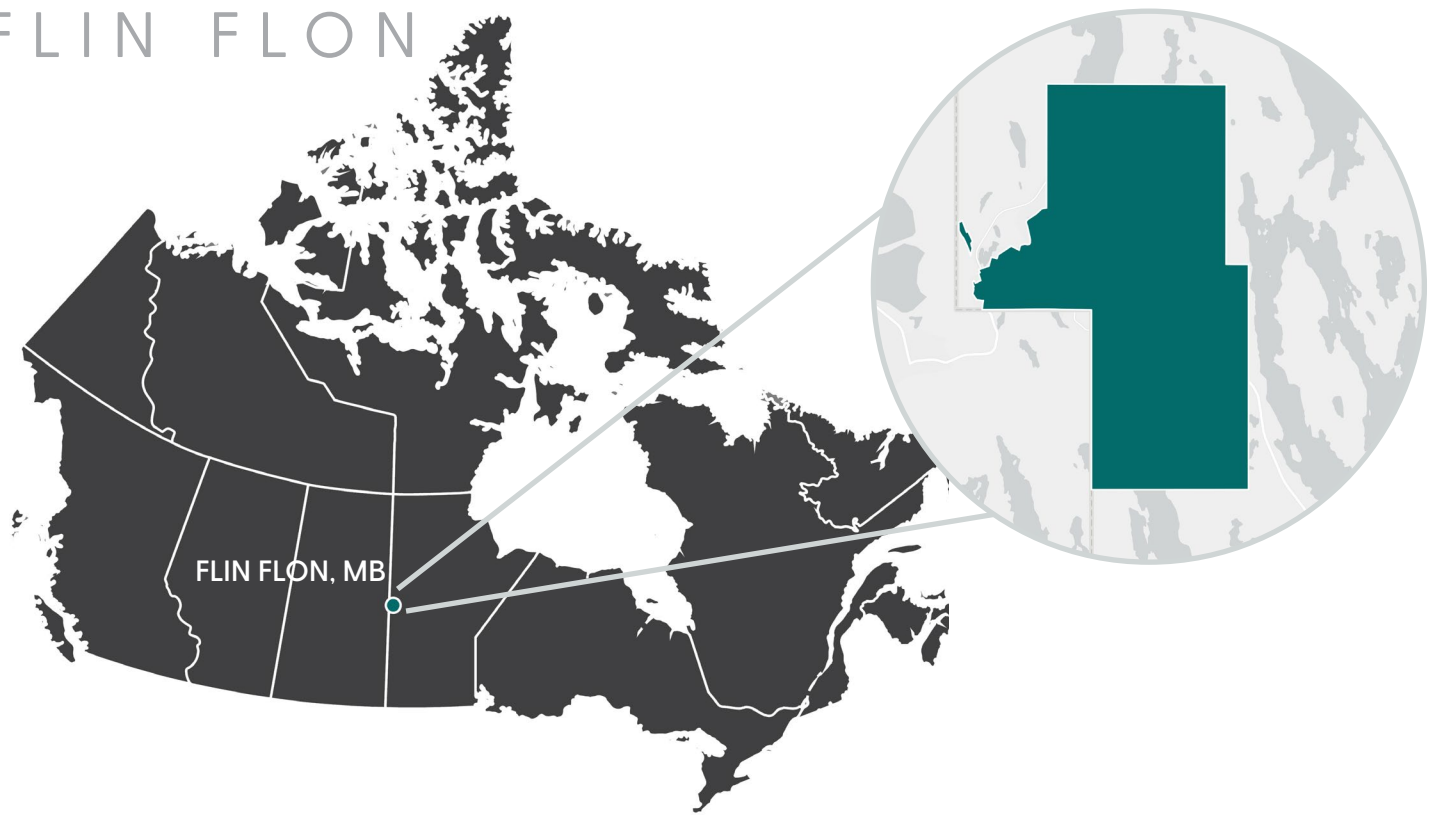




# IN THIS PROFILE

<b>INTRODUCTION.....</b>	<b>1</b>	<b>COMMERCE.....</b>	<b>15</b>
1.1 Location.....	1	5.1 Real Estate.....	15
<b>CITIZENS .....</b>	<b>2</b>	5.2 Cost of Housing.....	15
2.1 Population.....	2	5.3 Education.....	15
2.2 Growth.....	2	5.4 Logistics.....	16
2.3 Age Profile.....	2	5.5 Labour Force.....	17
2.4 Language Profile .....	2	5.6 Key Sectors.....	18
2.5 Housing Types.....	3	5.7 Opportunities.....	18
2.6 Household Income.....	4	<b>CONNECT WITH US .....</b>	<b>19</b>
<b>AMENITIES.....</b>	<b>5</b>	6.1 Programs & Supports.....	19
3.1 Arts, Culture & Heritage Amenities.....	6	6.2 Stats & Resources .....	19
3.2 Health & Wellness Amenities.....	7	6.3 Contact Us.....	19
<b>DEVELOPMENT AREAS .....</b>	<b>8</b>	<b>SERVICE LIST .....</b>	<b>20</b>
4.1 Land Availability .....	8		
4.2 Transportation & Commuting.....	11		
4.3 Water & Waste .....	13		
4.4 Digital Infrastructure .....	13		
4.5 Hydroelectricity .....	14		

## WHERE IS FLIN FLON



# 1.0 INTRODUCTION

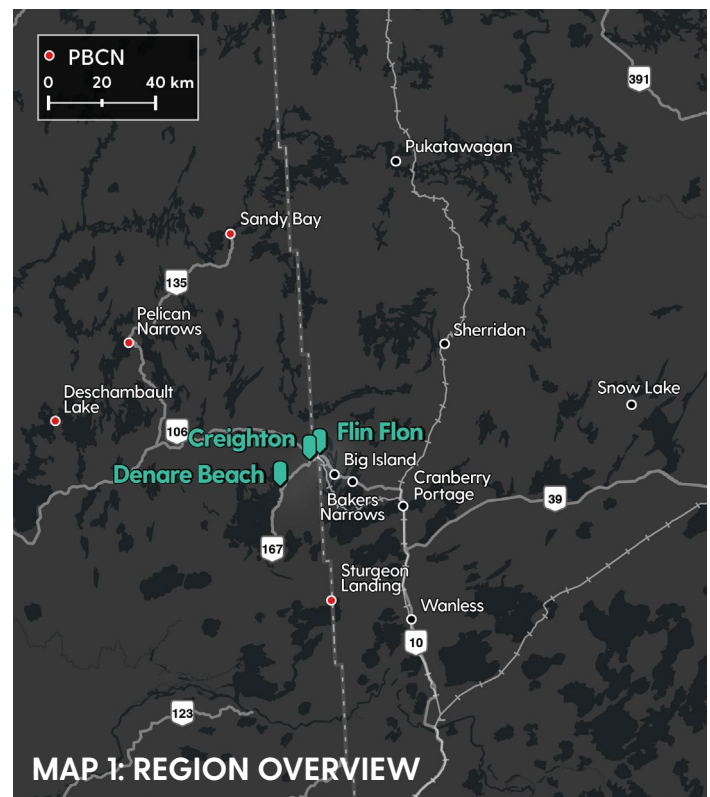


Welcome to the City of Flin Flon. Located on the traditional territory of the Woodland Cree and Swampy Cree, Flin Flon has a population of 8962, including the communities of Big Island and Bakers Narrows. Founded in 1927, the community was named after the fictional character “Josiah Flintabbety Flonatin” and is well known for its successful mining industry.

The Flin Flon Greenbelt is known worldwide for having one of the richest known ore deposits. It has been successfully and sustainably mined and refined in the Flin Flon area for 100 years making it the longest, preeminent copper-zinc producer in the world.

## 1.1 LOCATION

The City of Flin Flon is proudly located in both Manitoba and Saskatchewan as it sits on the border of the two provinces. Flin Flon forms the core of the region, as it is within a reasonable driving distance to the Town of Creighton (5 minutes) and the Village of Denare Beach (15 minutes). Flin Flon also serves many members of the Peter Ballantyne Cree Nation (PBCN) communities.



### Surrounding Communities:

- |                  |                     |                    |                              |
|------------------|---------------------|--------------------|------------------------------|
| • Creighton      | • Cranberry Portage | • Dechambault Lake | • Sandy Bay/<br>Wapaskokimaw |
| • Denare Beach   | • Sherridon         | • Snow Lake        |                              |
| • Big Island     | • Sturgeon Landing  | • Pukatawagon      |                              |
| • Bakers Narrows | • Pelican Narrows   | • Wanless          |                              |

# 2.0 CITIZENS

## 2.1 POPULATION

The census population of Flin Flon, Manitoba and Flin Flon, Saskatchewan was 5185 in 2016 and 5099 in 2021. As of 2021, the combined population of the Region consists of nearly 17,000 residents.

## 2.2 GROWTH

Considering population changes that typically follow mining and other commodity-based industries, Flin Flon's population is relatively stable. Between 2016 and 2021, the community has realized a small decrease of -1.7%.

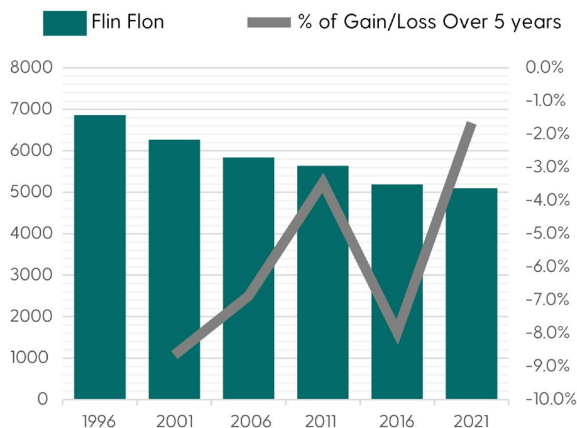
## 2.3 AGE PROFILE

The largest age group is between 55 and 59 years old. By 2030, it is expected that more than one-quarter of Flin Flon's population will be 65 years of age and older. At the time of the 2016 Census, only one-sixth of the population was 65 years and older.

## 2.4 LANGUAGE PROFILE

English is the most commonly spoken language in Flin Flon, with over 98% of the population speaking English at home. A small portion of the population also speak French, Cree languages, Tagalog, German, Spanish, Persian, Hungarian, Mandarin, Thai, and Hungarian.

Figure 1 Growth Trend



Statistics Canada 2021

# 26%

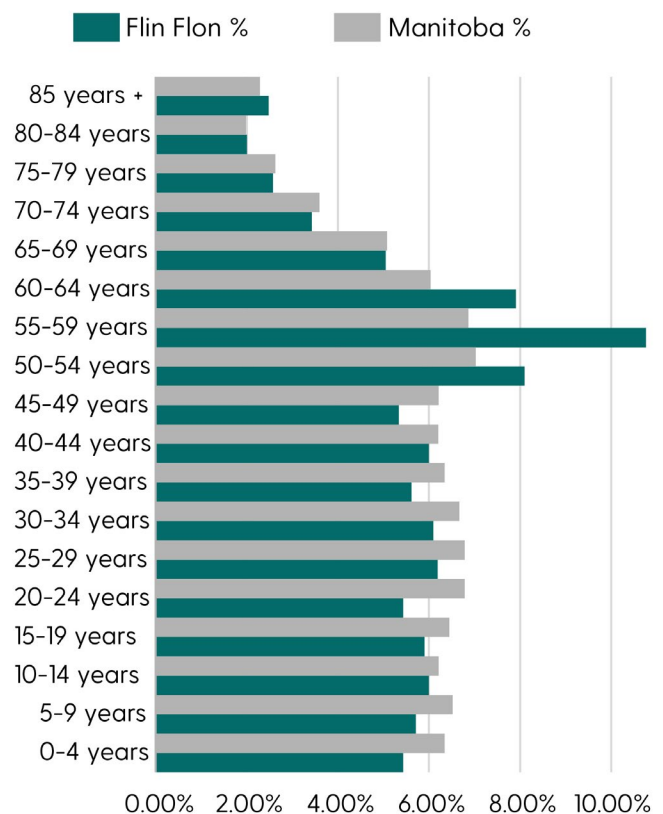
## of people aged 50-64

Table 1. Flin Flon Population

1996	2001	2006	2011	2016	2021
6861	6267	5836	5634	5185	5099

Statistics Canada (2021)

Figure 2 Age Profile

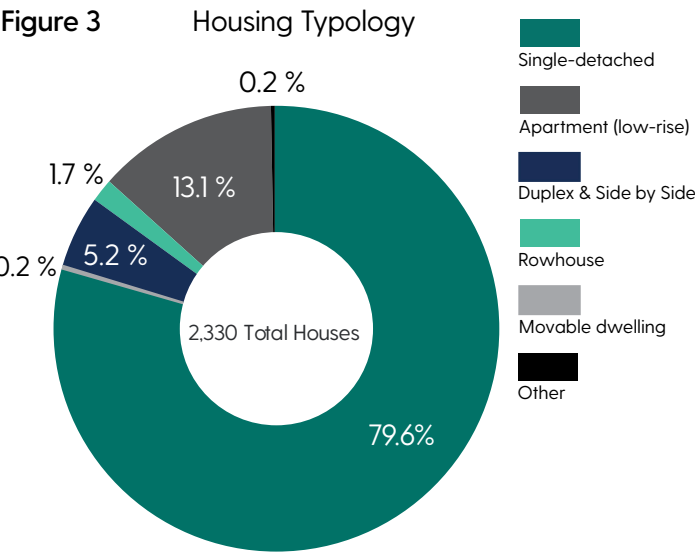


Statistics Canada 2016

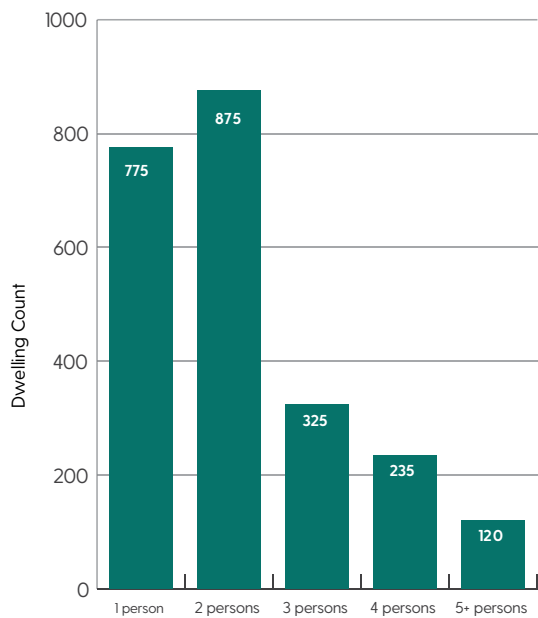


2.5 HOUSING TYPES

The distribution of dwelling types is comparable with most smaller urban, rural and northern areas in Manitoba and Saskatchewan. The dominant housing style in Flin Flon is the single-detached home. The second most common housing style is the low-rise apartment buildings. The remainder is made up of duplex, rowhouse, mobile, semi-detached, and other dwelling types.



**Figure 4**      Household Size  
Flin Flon



Statistics Canada 2016





## Average Household Size

# 2.2

## Household Income

**Flin Flon - \$91,149**

**Manitoba - \$85,373**

**Saskatchewan - \$93,942**

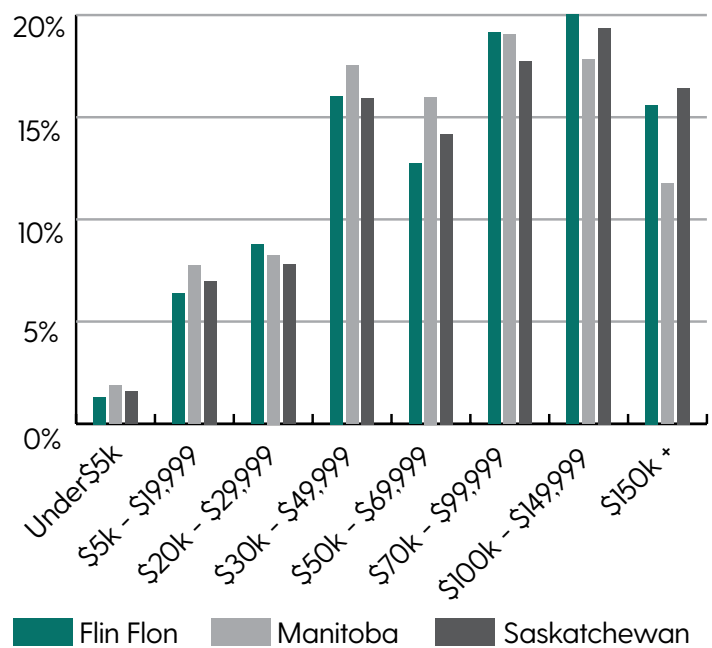
**Canada - \$92,764**

*Before Tax - Statistics Canada 2016*

## 2.6 HOUSEHOLD INCOME

Flin Flon's household income levels are above or comparable to Manitoba, Saskatchewan and national averages. More than 60% of households earn above \$50,000 annually, and in 2016, the majority of households were performing at or around the average national and Saskatchewan average.

Figure 5 Household Income



## 3.0 AMENITIES

---

Flin Flon is served by a wide range of amenities. Nestled in the Precambrian Shield, there is no shortage of beautiful natural scenery and plentiful opportunities for outdoor recreation. As the most populated community in the region, Flin Flon serves as the cultural hub with a variety of entertainment options, sport and recreation facilities, creative arts, as well as its well-established outdoor amenities.

### Bakers Narrows Provincial Park

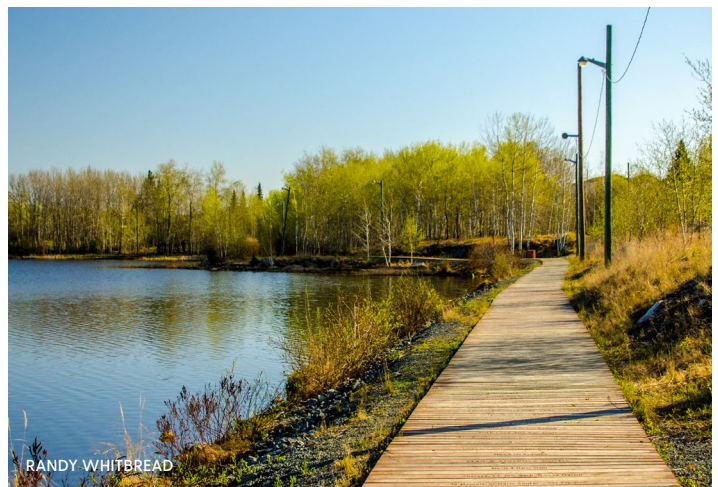
Bakers Narrows is located 20 minutes southeast of Flin Flon on Athapapuskow Lake. This Provincial Park contains electrically serviced campsites, yurt rentals, boating facilities (launch and docks), recreational vehicle facilities, and swimming areas on the lake. The park also features playgrounds, hiking, wildlife viewing, and fishing opportunities.

### Fishing

With the many lakes in the region, there are several opportunities for world-class trophy fishing. The area is known for producing world-class Walleye, Northern Pike, and Lake Trout

### Other Outdoor Amenities

**Hiking:** Cliff Lake Trail, Bakers Narrows Trail, Granite Lake Trail, [Flinty's Boardwalk](#)  
**Snowmobiling & Cross-Country Skiing & Mountain Biking:** [Border Explorers Snowmobile Club](#), [Flin Flon Ski Club](#)  
**Golf:** [Phantom Lake Golf Course](#)  
**Channing Beach**  
[Joe Brain Petting Zoo](#)







### 3.1 ARTS, CULTURE & HERITAGE AMENITIES

Flin Flon is known as the city built on rocks. It is rich in history and uniqueness. It is home to several community organizations including the [Flin Flon Community Choir](#) and the Northern Visual Arts Centre. For more of the Flin Flon story, visit the [Flin Flon Heritage Project](#).

#### Flin Flon Station Museum

The [Flin Flon Station Museum](#) grounds are home to a museum, a campground, and a statue of the city's namesake, Flintabbatey Flonatin. It was designated a heritage site in 2014 and is housed in the former Canadian National Railway Station building that has been moved (in 1983) to its now present location. The museum contains mining, transportation and cultural artifacts.

#### Northern Visual Arts Centre (NorVA)

The [Northern Visual Arts Centre \(NorVa\)](#) is located in Flin Flon and is the artistic hub for the local communities. The NorVa offers studio space, workshops and classes, and gallery space for artists within the region. It also hosts a number of other art groups including a photo club and the Northern Palette Art Club.

#### Entertainment & Hospitality Amenities

With its impressive amenities and community-minded citizens, the region is an ideal place to host a wide variety of events from tournaments, conferences, trade shows and meetings to large-scale sporting and recreation events.

Possible venues include:

- [Rotary Wheel](#)
- [Bakers Narrows Lodge](#)
- [Victoria Inn](#)
- [Community Hall](#) & R.H. Channing Auditorium
- Several meeting spaces

#### Whitney Forum & the Flin Flon Bombers

The [Whitney Forum](#) is the home of the [Flin Flon Bombers](#) (Saskatchewan Junior Hockey League). The Bombers have a long history of producing professional-calibre hockey players including Philadelphia Flyers great Bobby Clarke. The Whitney Forum also contains the Flin Flon Hockey Hall of Fame, an indoor skating rink and walking track, and can seat up to 2000 people.



### 3.2 HEALTH & WELLNESS AMENITIES

Flin Flon is a hub for health, wellness and care services in the Northern Health Region. The range of healthcare and wellness amenities extends well beyond provincial boundaries and includes hospital and person care facilities. People from across Northern Manitoba and Saskatchewan travel to Flin Flon for services such as dental, massage therapy, x-ray diagnostic, and more.



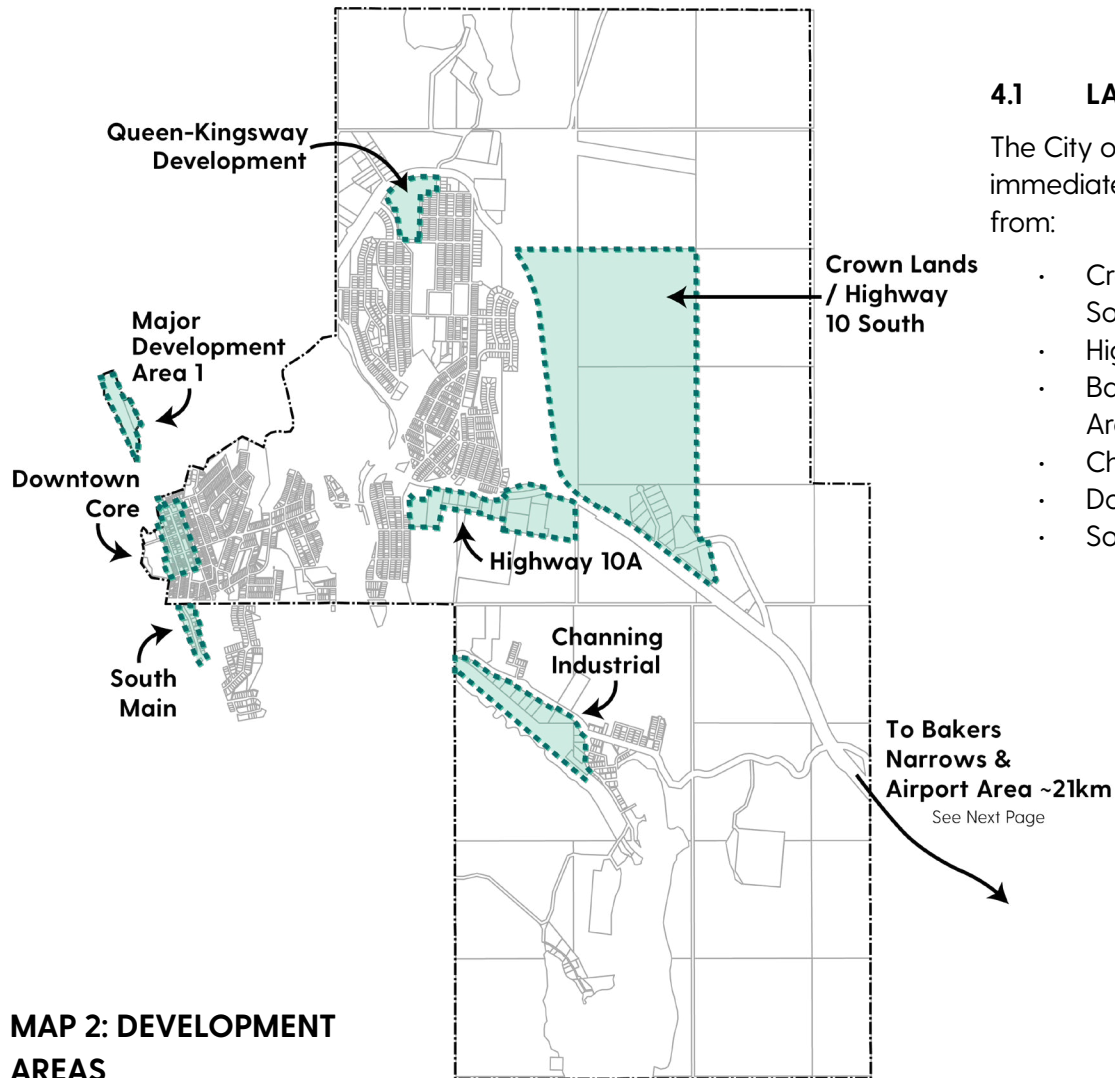
**Table 2. Health & Wellness Services**

Service	Name
Dental	Parker Denture Clinic Up North Dental Centre Flin Flon Dental Tooth Suite Dental Clinic
Optometry	Northern Eyecare Ltd
Chiropractor	Chiropractic on Main
Massage Therapy	Healing Palms Flin Flon Massage Tranquil Essence Spa Alluring Impression Day Spa and MediSpa
Fitness	Sal's Fitness Community Hall (private gym)
Pharmacy	Pharamsave Flin Flon Pharmasave Flin Flon (Church St) Walmart Pharmacy
Medical Clinic	Flin Flon Clinic
Emergency Services	Flin Flon EMS Station Flin Flon General Hospital Flin Flon Fire Department Flin Flon RCMP

Service	Name
Counseling	Women's Safe Haven/ Resource Service Inc. Addictions Foundation of Manitoba
Social & Community Support Services	Manitoba Family Services Northern Neighbours Foundation Flin Flon Aboriginal Friendship Centre Inc. Manitoba Family Conciliation Flin Flon Child & Family Services Flin Flon & District Assessment & Referral Services
Personal Care Home	Flin Flon Personal Care Home (30 beds) Northern Lights Manor (36 beds)
Daycare Facilities	Flin Flon Kiddie Korner Daycare Inc Cree Nation Child & Family Caring Agency Flin Flon Sweetgrass Aboriginal Head Start Home daycare centres



# 4.0 DEVELOPMENT AREAS



## 4.1 LAND AVAILABILITY

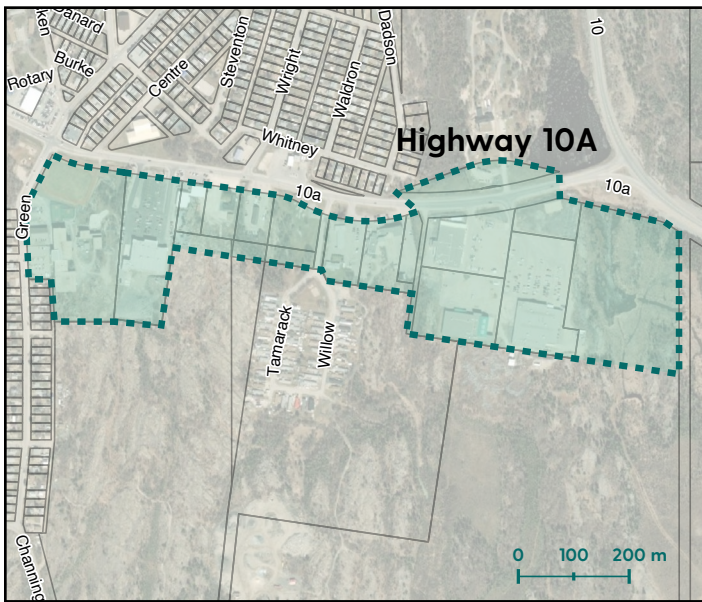
The City of Flin Flon has several immediate development areas from:

- Crown Land / Highway 10 South
- Highway 10A
- Bakers Narrows & Airport Area
- Channing Industrial
- Downtown Core
- South Main

**MAP 2: DEVELOPMENT AREAS**

**Table 3. Flin Flon Zoning Summary**

	Acres	Ratio	Lots	Avg (ac)	Median (ac)
Residential	384.54	9%	2389	0.161	0.1377
Commercial	58.42	1%	220	0.265	0.0935
Industrial	144	3%	87	1.66	0.81
Institutional	26.73	1%	9	2.97	0.865
Recreation and Parks	221.68	5%	45	4.92	1.49
Limited Development	3463	81%	93	37.24	2.07
<b>Total</b>	<b>4298.37</b>	<b>100%</b>	<b>2843</b>		



### Highway 10A Development Area

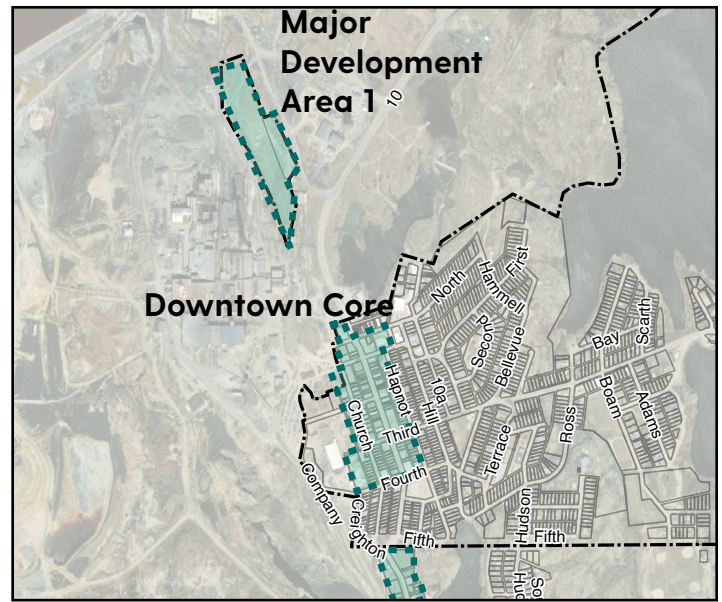
Intended Use: Residential - Mixed Use

Available Amenities & Services:

- Water, Wastewater & Hydro Infrastructure
- K-12 Schools & Community Park
- Big Box Retail
- Concrete Sidewalks

Development Opportunities:

- Condominium Development
- Hotel, Entertainment and Hospitality
- Small Scale Retail
- Large Format Commercial



### Downtown Core & Major Development Area

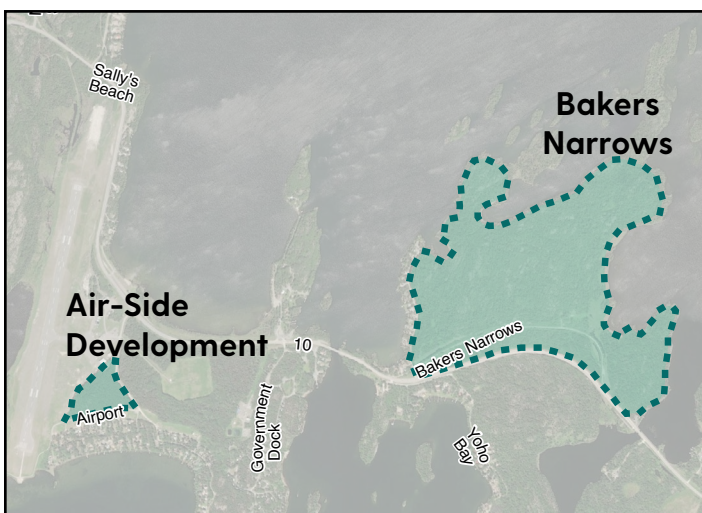
Intended Use: Employment - Mixed Use

Available Amenities & Services:

- Water, Wastewater, Hydro, and High-Speed Internet Infrastructure
- Government Services
- Unique Retail
- Hospital & Cultural Amenities

Development Opportunities:

- Infill Development
- Adaptive Reuse of Buildings
- Small Scale Retail
- Commercial Highway (South Main)
- Hotel & Hospitality



### Bakers Narrows & Air-Side Development Area

Intended Use: Residential & Accommodations

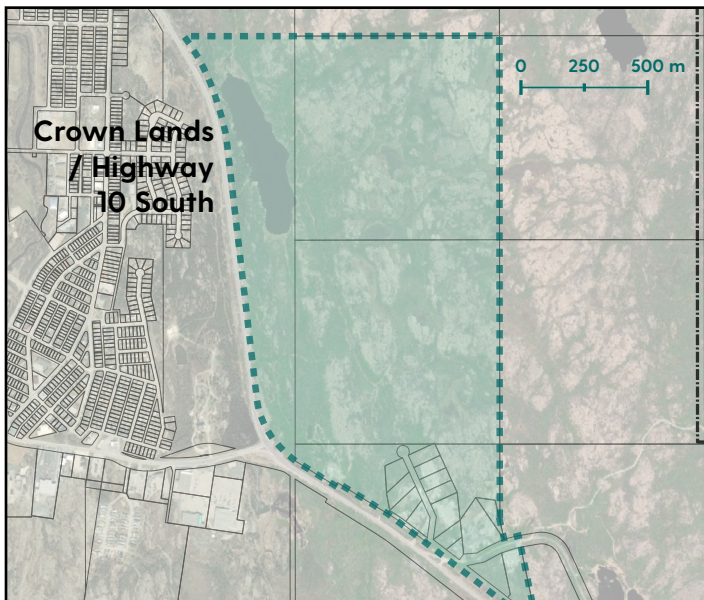
Available Amenities & Services:

- Bakers Narrows Provincial Park
- Flin Flon Airport
- Camp Whitney (nearby)

Development Opportunities:

- Cottage Accommodations
- Trails & Outdoor Recreation





### Crown Lands / Highway 10 South

Intended Use: Various

Available Amenities & Services:

- Grant Lake
- Access to Major Provincial Highway

Development Opportunities:

- Residential development
- Seasonal accommodations
- Commercial highway uses
- Light industrial uses to the south



### Queen - Kingsway Development

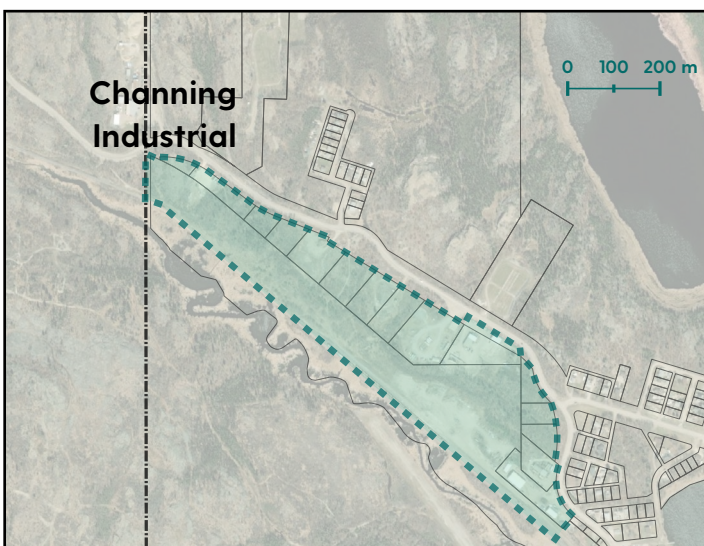
Intended Use: Residential

Available Amenities & Services:

- Water, Wastewater, Hydro, and High-Speed Internet Infrastructure
- Creek and open space views
- Nearby hospital & recreational amenities

Development Opportunities:

- Greenfield Development
- Seniors Residence
- Apartment-style condominium



### Channing Industrial

Intended Use: Industrial

Available Amenities & Services:

- City-owned lots available
- Readily serviceable
- Access to CRNP branch railway

Development Opportunities:

- Value-added manufacturing
- Bi-modal transportation



## 4.2 TRANSPORTATION & COMMUTING

Flin Flon's transportation network extends well beyond its municipal borders and is a fundamental component to fuel the economy and enhance the region's ability to bring in people, supplies and products. It's served primarily by Provincial Trunk Highway 10, a primary arterial that begins at the International Peace Garden along the Canada–United States border and transitions into Highway 106 across the provincial border when passing through Flin Flon and Creighton. PTH 10a is a Secondary Arterial Highway with an RTAC Gross Vehicle Weight restriction of 63500 kilograms. It has a surface width between 7.5 and 9 meters that was paved in the early 2000s using asphalt.

Aside from personal vehicle traffic, Flin Flon offers transit services. The service runs from 5:25 AM to 6:50 PM Monday through Friday, and on Saturdays from 11:30 AM to 6:50 PM.

Via air, there are a number of airports that service the greater Flin Flon area, but the Flin Flon Airport is the major air hub for Flin Flon and the region. Service is primarily provided through [Calm Air](#) to larger centres like Winnipeg and The Pas.

The Pas (Grace Lake Airport) also provides service to Pukatawagon & chartered flights through [Mississippi Air](#). Additionally, charter flights to Cameco Mines are available through [Good Spirit Air Service](#), which operates out of Yorkton, Saskatchewan. Flin Flon and the surrounding region are also easily accessed by rail. There is a [Via Rail](#) station in The Pas that provides connections to Winnipeg and Churchill.

Outside of The FDC Region, Prince Albert, Saskatoon, and Winnipeg are the nearest major markets accessed mainly via highways, with the exception of Winnipeg.



**Figure 6** Access to Markets



## Transportation Options

- **Flin Flon Airport (YFO)**  
Airport Rd Flin Flon, MB  
[Email](#) | [Website](#) | P: 204-687-7447
- **Calm Air (via Flin Flon Airport)**  
To Winnipeg - Daily weekday flights  
Duration: ~ 90 min  
To The Pas - 2-3 weekly flights  
Duration: ~ 25 min  
Airport Rd Flin Flon, MB  
[Website](#) | P: 1-800-839-2256
- **Other Airports:**  
The Pas Airport  
Grace Lake Airport (home of Missinippi Air and The Pas Flying Club)  
Wings Over Kississing (Flin Flon Float Base)
- **Bus Information:**  
Mahihkan Bus Lines (departing Flin Flon)  
Service to Winnipeg, The Pas, Grand Rapids Swan River, Dauphin, Neepawa  
To Winnipeg: Sunday, Tuesday, Wednesday, Thursday  
Duration: ~ 11 hours  
[Email](#) | [Website](#) | P: 204-623-2161
- **Flin Flon Transit Rates:**  
Fares: Adult - \$2, Student & Senior - \$1.50, Children 5 & under - Free  
Passes: Adult - \$40/month, Student & Senior - \$33  
[Website](#)
- **Via Rail**  
300 Hazelwood Ave, The Pas, MB  
[Website](#)
- **Ace Cabs**  
P: 204-271-3399
- **Ty's Taxi**  
P: 204-687-4441
- **U-Drive Car Rentals**  
110 Highway 10A, Flin Flon, MB  
[Email](#) | [Website](#) | P: 204-687-5077

## 4.3 WATER & WASTE

### Water Treatment Plant

Drawing from Cliff Lake as its source, the Water Treatment Facility for the City of Flin Flon was built in 2013 and is equipped with a 300mm intake pipe.

The treatment facility is situated on top of the water storage reservoir, which holds enough emergency water and balances distribution in the range of 900 litres per day per person.

It has now been upgraded to a high structural and leakage integrity. It also has better insulating value, new piping, and valving. The water treatment plant has a 6.5 million litre reservoir.

### Wastewater Treatment Plant

Flin Flon's sanitary sewer system uses a series of lift stations and a combined system that collects both storm and wastewater. The existing treatment system consists of a sequencing batch reactor and sludge treatment.

### Waste Management

Flin Flon has a recycling centre located within the city. The centre has the facilities to recycle tires, used motor liquids, industrial and commercial wastes, metal, appliances, and household hazardous waste. The facility has processed over 500,000 kilograms of recycled materials in 2021.

## 4.4 DIGITAL INFRASTRUCTURE

Thanks to recent investment into fiber optic technology, certain residences and businesses in Flin Flon are now eligible to enjoy download speeds of up to 1 gigabyte per second. For addresses where fiber cable coverage is not currently available, mostly in areas on the fringe of town, are eligible for wireless home internet that offers download speeds between 25 and 60 megabytes per second. Communities in the FDC Region also have access to [Starlink](#) for high-speed internet service.

LTE and 4G cellular services are available in the Flin Flon area through numerous service providers. [Rogers](#) and [Telus](#) offer the greatest LTE/4G coverage across provincial borders, while [SaskTel](#) and [BellMTS](#) offer greater coverage in their respective jurisdictions.



## Landfill Rates

### Resident:

\$10 (Car) to \$150 (Semi Truck)

### Non-Resident:

\$50 (Car) to \$300 (Semi Truck)

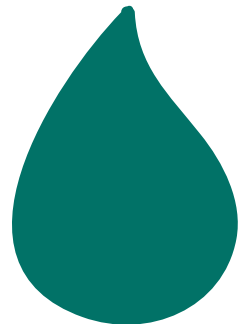
## Water Rates

### Metered -

\$12.33/mo

### Unmetered -

\$329.61/quarterly



## Access to Propane

Propane for residential, commercial, and industrial uses is available through [Stittco Energy](#) and [Co-op](#).



## 4.5 HYDROELECTRICITY

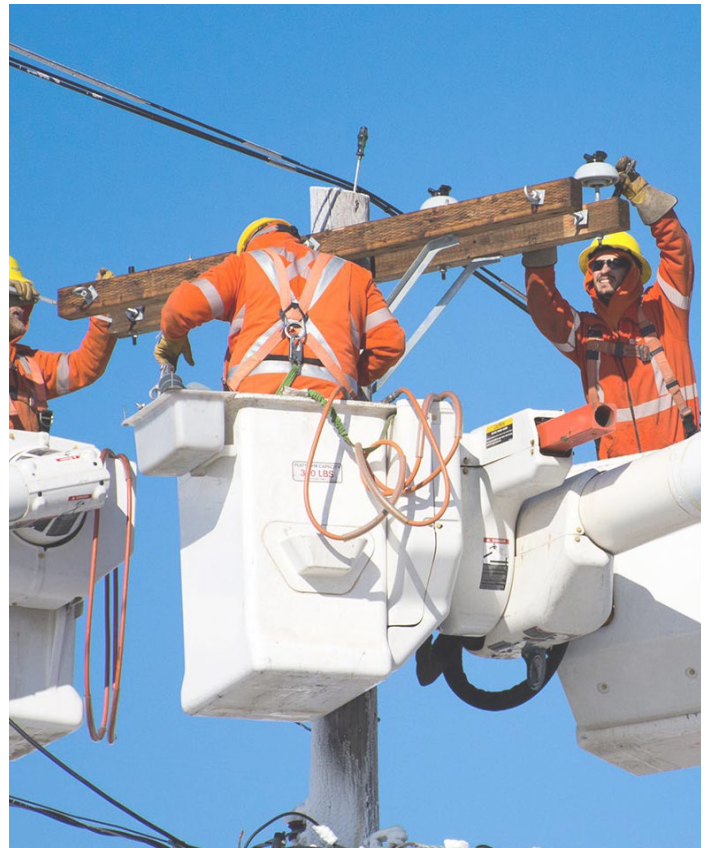
Electricity is provided to Flin Flon (both Manitoba and Saskatchewan) by [Manitoba Hydro](#). There's access to industrial levels of electricity available in Flin Flon. Rates as of January 2022 are:

**Table 4. Residential Standard Hydro Rates**

Charge	Cost
Basic Monthly Charge (<200 Amp)	\$9.20
Basic Monthly Charge (>200 Amp)	\$18.40
Energy Charge	9.324c/kWh

**Table 5. Residential Seasonal Rates**

Charge	Cost
Basic Monthly Charge (<200 Amp)	\$106.32
Energy Charge	9.324c/kWh



**Table 6. Commercial Hydro Rates**

Charge	Monthly	Monthly Charge (\$/kWh)			Monthly Demand (\$/kVA)	
		First 11,000 kWh	Next 8,500 kWh	Balance of kWh	First 50 kVA	Balance Demand
General Service Small	\$20.74	9.485	7.277	4.492	n/a	\$11.52
General Service Small (3 Phase)	\$33.69					
General Service Medium	\$33.69	9.485	7.277	4.492	n/a	\$11.52
General Service Large < 30 kV	n/a		4.219			\$9.75
General Service Large 30-100 kV	n/a		3.882			\$8.26
General Service Large > 100 kV	n/a		3.766			\$7.36

For larger energy needs, Contact [Manitoba Hydro](#)

# 5.0 COMMERCE

## 5.1 REAL ESTATE

On average, Flin Flon has 6.1% more owner-occupied dwellings than Manitoba and only 2.8% more than Saskatchewan. Rental units provide affordable housing options to residents and the flexibility in choice that more people are seeking out currently. Housing ownership data was last accurately calculated in the 2016 census.

## 5.2 COST OF HOUSING

Housing prices in Flin Flon are significantly lower than the Manitoba and Saskatchewan provincial median. Based on the 2016 Census, the average household value in Flin Flon was \$131,628, lower than both provincial averages by more than half. The average monthly costs for housing are also considerably lower than both provincial averages.

## 5.3 EDUCATION

The 2016 Census identified 42% of people in Flin Flon had completed their high school and moved on to attain a trade, college or university education.



Table 7. Cost of Housing

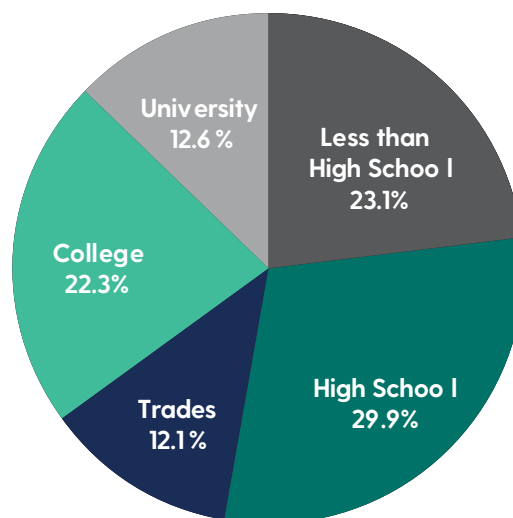
Location	Median Price	Average Price	Rental Average Monthly Costs	Ownership Average Monthly Costs
SK	\$299,606	\$318,917	\$1,021	\$1,178
MB	\$275,473	\$297,444	\$891	\$1,085
Flin Flon	\$114,712	\$131,628	\$659	\$801



## 5.4 LOGISTICS

Flin Flon and the surrounding communities are well-positioned for logistical access for commercial freight. By rail, Flin Flon is serviced by [The Hudson Bay Railway](#) with service from Churchill (a major maritime port) through The Pas. [Keewatin Railway Company](#) provides service from The Pas to the north up to Pukatawagon and carries both freight and passengers. By land, there are a number of local and national trucking and courier companies able to service the surrounding areas, additionally along a national network. The availability of transportation options presents opportunities for warehousing and staging of goods.

Figure 8 Education Attainment



Statistics Canada 2016

Table 8. Ownership vs. Rental			
Dwelling Tenure	Flin Flon	MB*	SK*
Owner-Occupied	74.8%	68.7%	75.6%
Rental	25.2%	28.7%	25.4%

Statistics Canada 2016

\*Census 2016 total housing numbers include Band housing in Manitoba and Saskatchewan. Whereas Band housing makes up approximately 2.6% in each province

Table 9. Training Programs	
Institution	Courses/Programs Offered
University College of the North	Diploma of Practical Nursing
Northern Manitoba Mining Academy	General Health & Safety Leadership & Management Occupational Hygiene Specialized Health & Safety Manitoba Heavy Construction Association

Figure 7 Construction History

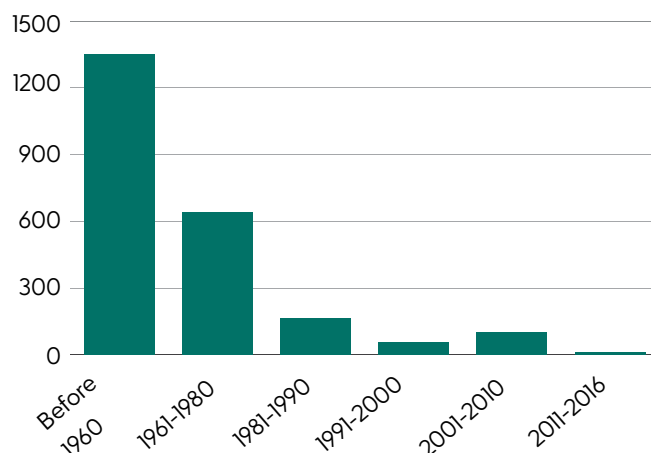


Table 10. Available Education				
School	2017	2018	2019	2020
Ecole McIsaac School	389	399	398	367
Hapnot Collegiate	294	250	244	220
Many Faces Education Centre	52	92	102	69
Ruth Betts Community School	215	243	243	249
<b>Total</b>	<b>950</b>	<b>984</b>	<b>987</b>	<b>905</b>

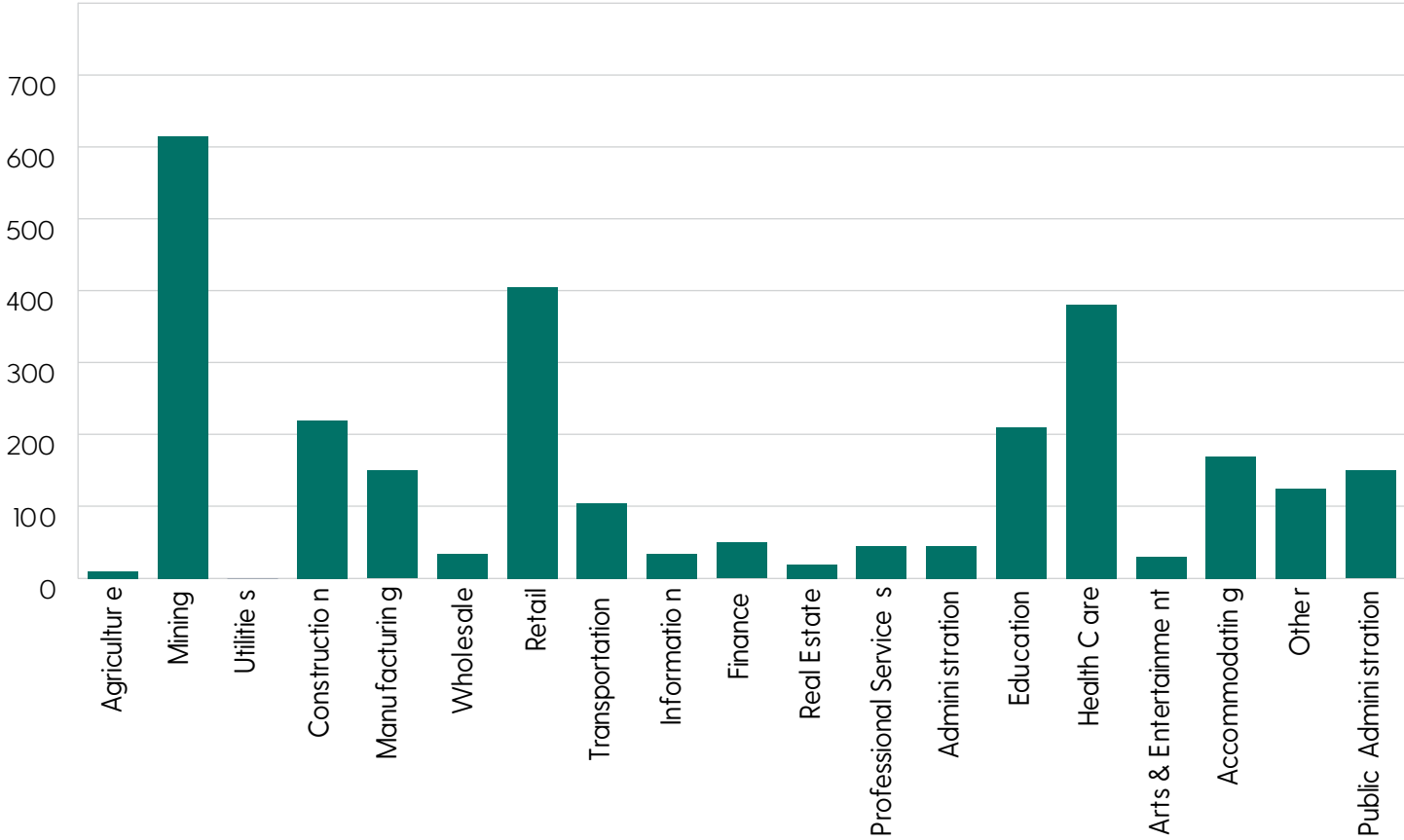
5.5 LABOUR FORCE

Flin Flon has an estimated 2690 people within its labour force. In the region, the mineral extraction and related industry provides the largest sector of employment, employing 21.96% of the workforce. This is followed by retail at 14.46% and then health care at 13.57% of the total workforce.

Flin Flon's employment rate is 1.5% higher than the national average at 61.7%. Flin Flon maintains a lower unemployment rate than Saskatchewan and the national average at 6.8%. While at the time of the 2006 census the employment rate was at 67.5%, a decline of 5.2% over the ten-year period.

Table 11. Average Hourly Wage by Labour (2016)	
Industry	Wage (MB average)
Resources (Agriculture & Mining)	\$22.41
Management Occupations	\$44.29
Administration	\$26.13
Healthcare (Professional)	\$42.63
Nursing	\$40.97
Business & Finance	\$34.71
Applied Sciences	\$35.60
Education	\$38.99
Social & Community Services	\$20.22
Arts, Culture & Recreation	\$23.72
Manufacturing (labour)	\$20.29
Construction Trades	\$29.82

Figure 9 Workforce by Industry (# of jobs)





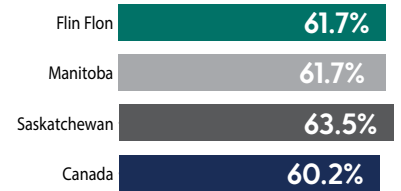
# 2,690

Annual Employment



# 6.8%

Unemployment Rate



# 61.7%

Employment Rate

## 5.6 KEY SECTORS

- [Manufacturing](#)
- [Tourism, Heritage, Arts & Culture](#)
- [Service Hub & Housing Sector](#)
- [Information Technology & Energy Innovation](#)

## 5.7 OPPORTUNITIES

Flin Flon is a community hub for various industries and employers. Located along Provincial Truck Highway 10 with available land and access to diverse markets, Flin Flon is in a position to meet investment objectives. The community has affordable land and properties in various areas suitable for commercial services, targeted residential, and major industrial projects.



Table 12. Income Tax (2022)

Jurisdiction	Tax Brackets & %
Federal	15% on first \$50,197 20.5% on next \$50,195 26% on next \$55,233 29% on next \$66,083 33% of taxable income over \$221,708
Manitoba	10.8% on first \$34,431 12.75% on next \$74,416 17% on amount over \$74,416
Saskatchewan	10.5% on first \$46,773 12.5% on next \$133,638 14.5% on amount over \$133,638

Table 13. Business Highlights

Largest Industries	Growing Industries
Mining	Mining value-added
Retail	Tourism
Healthcare	Services / Retail
Construction	Construction
Education	Information Technology



## 6.0 CONNECT WITH US

---

### 6.1 PROGRAMS & SUPPORTS

We offer several programs, dedicated personnel, grants and incentives to support economic development in the region. Our communities are open for business and welcome investment. Please visit the following websites to learn more about our available programs, supports and opportunities within the City of Flin Flon:

- [Invest FDC](#)
- [Flin Flon Development Areas](#)

### 6.2 STATS & RESOURCES

Visit our Stats & Resources Library [here](#) to access a wide-range of reports, open data, publications and relevant municipal by-laws.

### 6.3 CONTACT US

Ready to start your next business investment or expansion? We are available and ready to assist investors and business.

Our team of economic development experts are here to help. If you would like more information, please contact:

#### **Regional Economic Development Manager**

FDC Regional Economic Development Commission  
City of Flin Flon | Town of Creighton | Village of  
Denare Beach, Canada  
+1.306.688.8253 | +1.204.681.7505  
[econdev@investfdc.ca](mailto:econdev@investfdc.ca)



# 7.0 SERVICE LIST

---

## GOVERNMENT SERVICES

- **Service Canada**  
111 Main St, Flin Flon, MB R8A 1J9  
[Website](#) | P: 1-800-622-6232
- **Government of Manitoba**  
102-143 Main St, Flin Flon, MB R8A 1K2  
P: 204-687-1708
- **City of Flin Flon**  
20 First Ave, Flin Flon, MB R8A 0T7  
[Email](#) | [Website](#) | P: 204-681-7511
- **Manitoba Metis Federation**  
101 Main St, Flin Flon, MB R8A 1J9  
[Email](#) | [Website](#)
- **Province of Manitoba Northern Planning Office/District**  
27 – 2nd Avenue SW Dauphin, MB R2N 3E5  
[Email](#) | [Website](#) | P: 204-622-2115

## MUNICIPAL SERVICES & ENERGY

- **Utilities Department**  
20 First Ave, Flin Flon, MB, R8A 1K2  
[Email](#) | [Website](#) | P: 204-681-7511
- **Manitoba Hydro**  
175 Wright Ave, Flin Flon, MB R8A 0E2  
[Email](#) | [Website](#) | P: 1-888-624-9376
- **Federated Co-op Bulk Propane**  
4 Timber Lane, Flin Flon, MB R8A 1S3  
[Email](#) | [Website](#) | P: 204-687-8038
- **Stittco Energy**  
78 Third Ave, Flin Flon, MB R8A 1N6  
[Website](#) | P: 204-687-3493

## BUSINESS & CULTURAL SERVICES

- **Flin Flon & District Chamber of Commerce**  
5 Main St, Flin Flon, MB R8A 1J7  
[Email](#) | [Website](#) | P: 306-688-0838
- **Flin Flon Arts Council**  
P.O. Box 933 | Flin Flon, MB R8A 1N7  
[Email](#) | [Website](#) | P: 204.687.5974
- **Flin Flon Tourism Bureau**  
20 First Ave, Flin Flon, MB R8A 0T7  
[Email](#) | [Website](#) | P: 204-681-7530

## BANKING SERVICES

- **Flin Flon Credit Union**  
36 Main St, Flin Flon, MB, R8A 1J6  
[Email](#) | [Website](#) | P: 204-687-6620
- **RBC Royal Bank**  
94 Main St, Flin Flon, MB, R8A 1K1  
[Website](#) | P: 204-687-7551
- **CIBC**  
89 Main St, Flin Flon, MB, R8A 1J9  
[Website](#) | P: 204-687-6620
- **Scotiabank**  
75 Main St, Flin Flon, MB, R8A 1J8  
[Website](#) | P: 204-687-7140

## EMERGENCY SERVICES

- **Flin Flon Fire Department**  
96 Hapnot St, Flin Flon, MB R8A 1L6  
[Website](#) | P: 204-681-7535
- **Royal Canadian Mounted Police**  
96 Hapnot St, Flin Flon, MB R8A 1L6  
[Website](#) | P: 204-681-7535
- **Flin Flon EMS Station**  
21 Creighton St, Flin Flon, MB R8A 1M1



Note: The images in this document are for illustrative purposes only, they are not produced by R+W Planning and Development. Images shown in this document are for public consumption only.

# THE FDC REGION

An aerial photograph of a suburban neighborhood, likely in the FDC region. The image shows a dense collection of houses with varying roof colors (yellow, orange, white, grey) interspersed with lush green trees. A prominent white water tower stands on the left side of the frame. In the foreground, a body of water, possibly a lake or a wide river, is visible, with a line of reeds or grasses separating it from the shoreline. The sky is a deep blue with scattered, soft, pinkish-purple clouds, suggesting a sunset or sunrise. The text "THE FDC REGION" is overlaid in the center of the image in a white, sans-serif font, with a thin white horizontal line extending from the "F" to the "N".